



Cross-border territorial monitoring: Luxembourg

Thierry Hengen

Policy Advisor on cross-border development and observation

Project manager GIS-GR

Ministry for Energy and Spatial Planning
Department of Spatial Planning



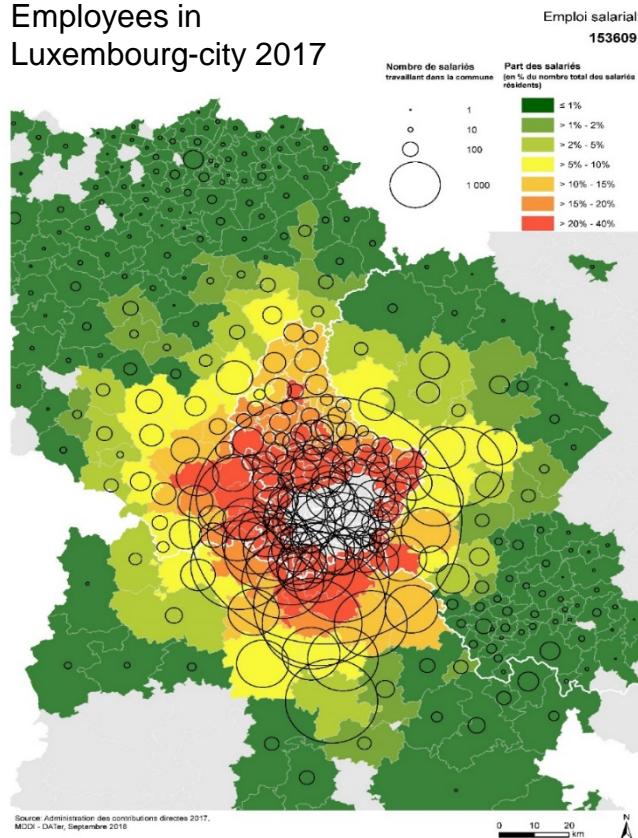
LE GOUVERNEMENT
DU GRAND-DUCHÉ DE LUXEMBOURG
Ministère de l'Énergie et de
l'Aménagement du territoire

Département de l'aménagement
du territoire

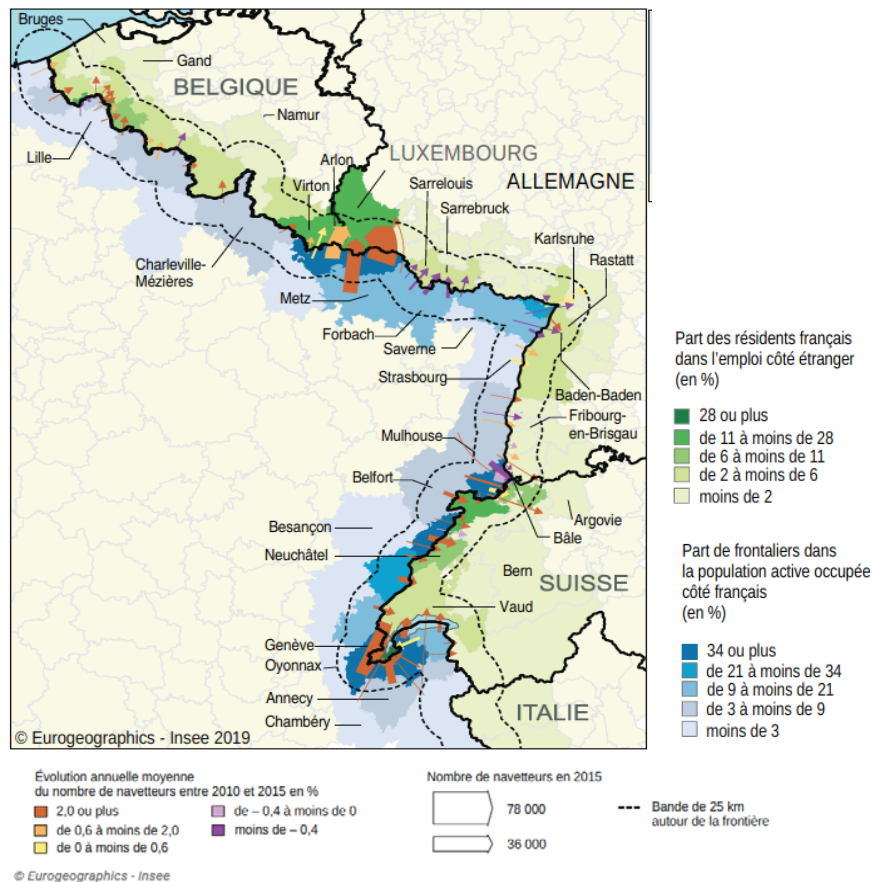


- Revision of the Master Programme for Spatial Planning (Programme directeur d'aménagement du territoire, PDAT)

Employees in Luxembourg-city 2017



French cross-border commuters 2015

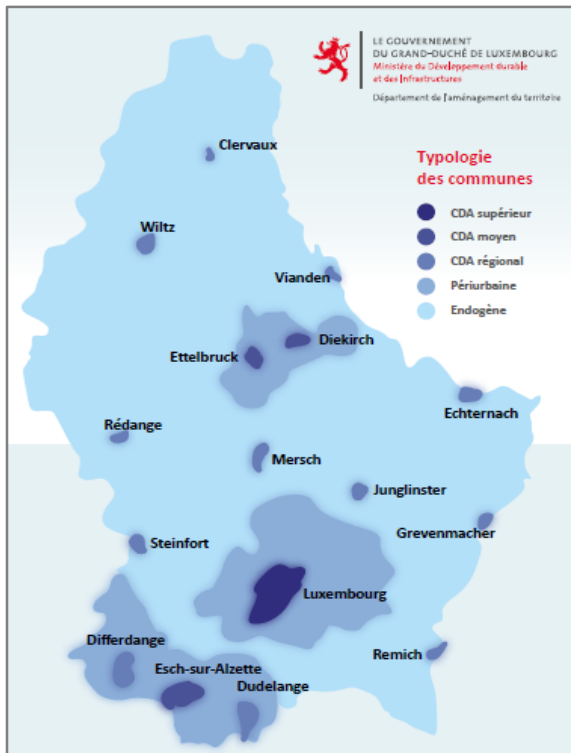


Source: MEA – DATer (2019), DRAFT PDAT 2020-2050



- ❑ Revision of the Master Programme for Spatial Planning (Programme directeur d'aménagement du territoire, PDAT)

Typology of municipalities in Lux.



Source: MEA – DATer (2019), DRAFT PDAT 2020-2050

Central locations in the Greater Region (2013)

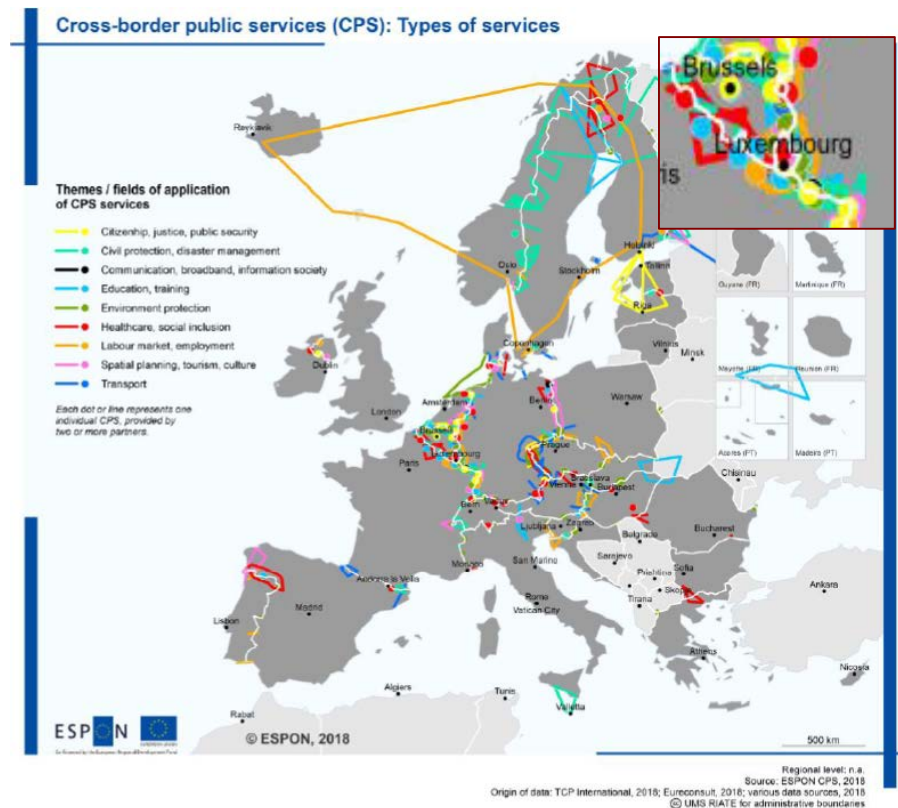
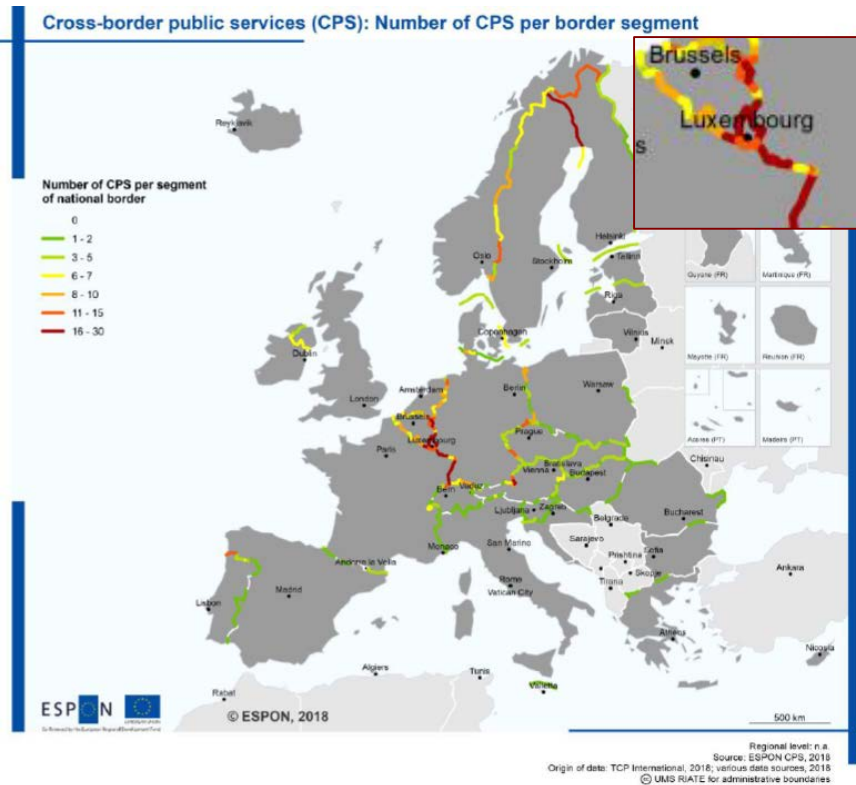


Source: GIS-GR 2013

European level: ESPON projects



- Targeted Analysis on Cross-Border Public Services: EU-wide overview on main features of cross-border service provision according to different types of territories (Lead contractor: Spatial Foresight, LU)

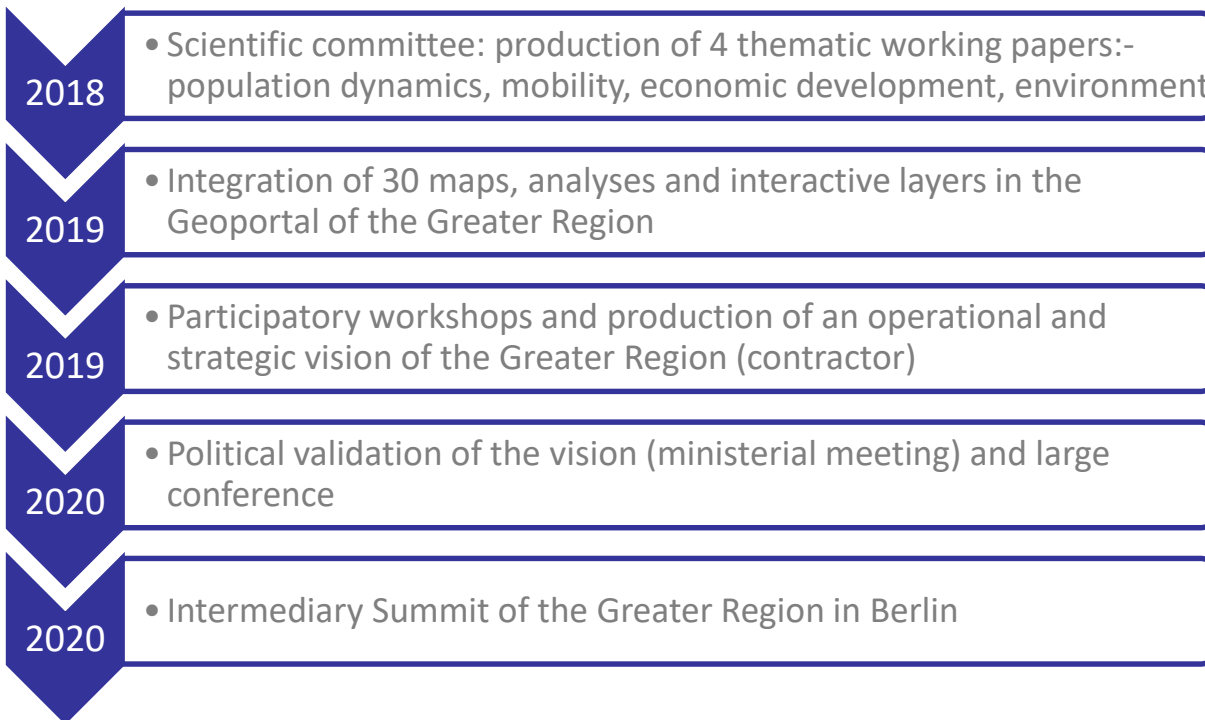


Source: Cross-border Public Services (CPS), Final report 2019

“Almost 42% of all identified CPS are located along borders of the Benelux countries and its neighbours France and Germany”



- ❑ Greater Region Territorial Development Concept (SDT-GR / REK-GR)
- ❑ Main project of the working party on spatial planning (Coordinating Committee for Territorial Development)



Raumentwicklungskonzept der Großregion

THEMENHEFT Nr. 1

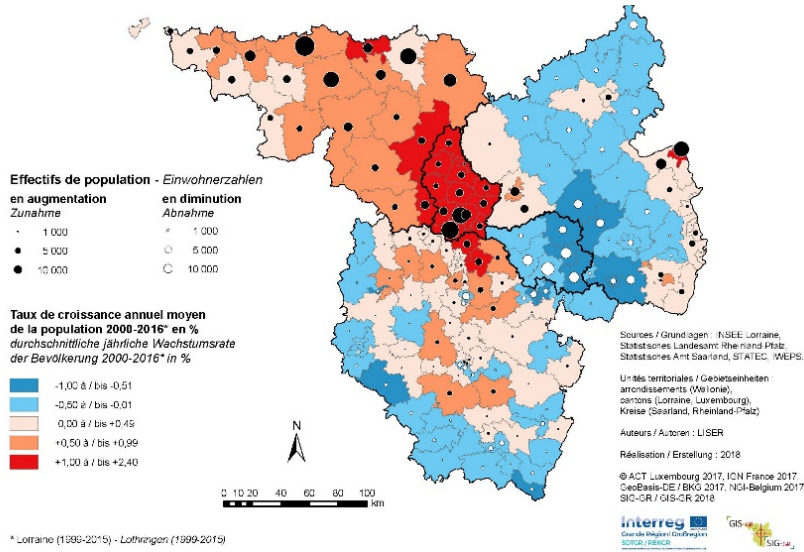
Demographische Dynamik und damit verbundene räumliche Erfordernisse



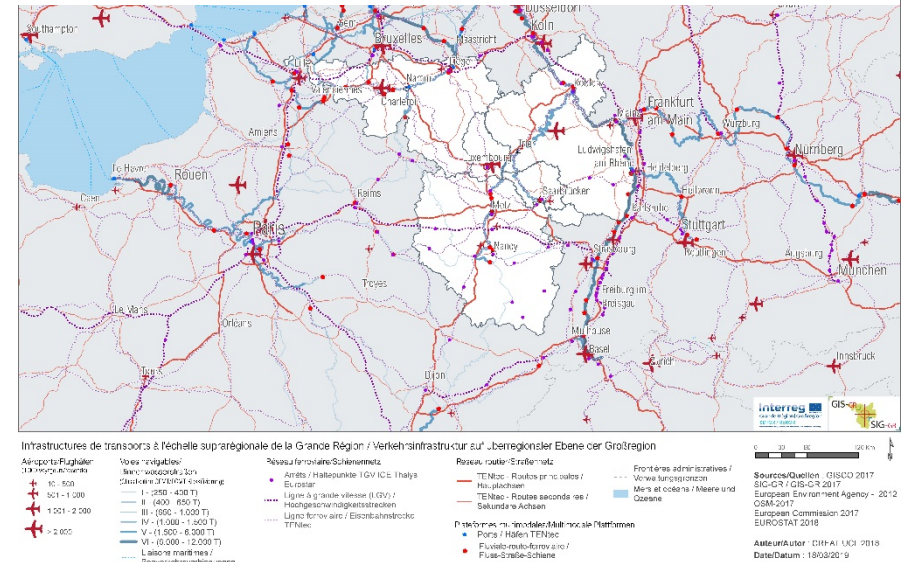
„Eine grenzüberschreitende Zukunftsvision für die Großregion“



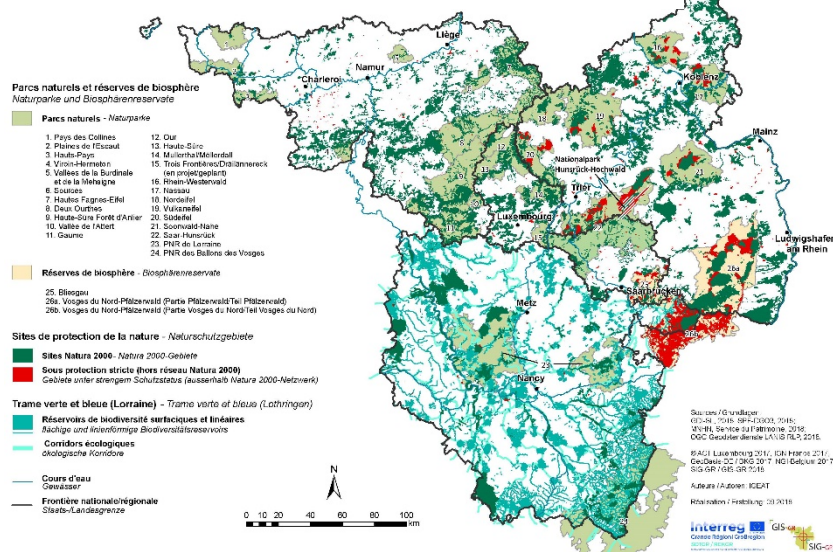
Average annual population growth rate 2000-2016



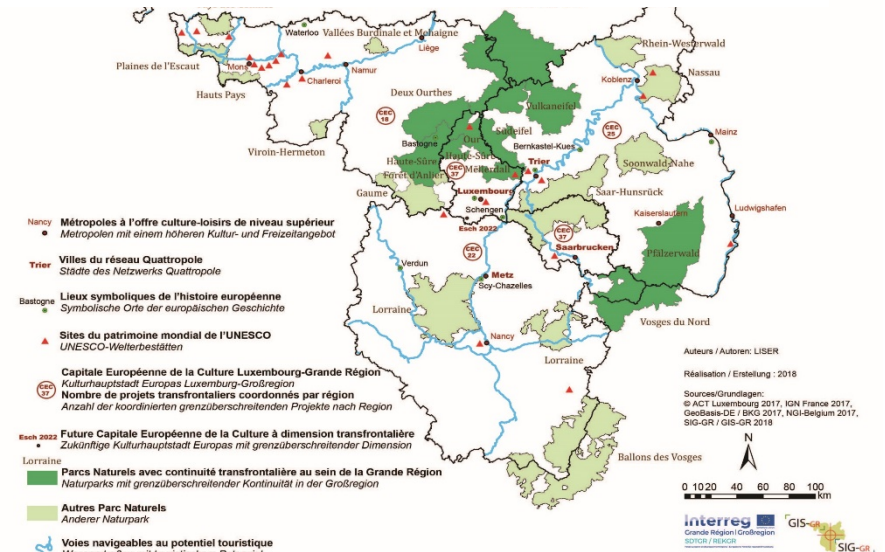
Passenger transportation 2018: supraregional level



Nature parks and protected areas 2018



Tourist attractiveness in 2018



Greater Region: GIS-GR



LE GOUVERNEMENT
DU GRAND-DUCHÉ DE LUXEMBOURG

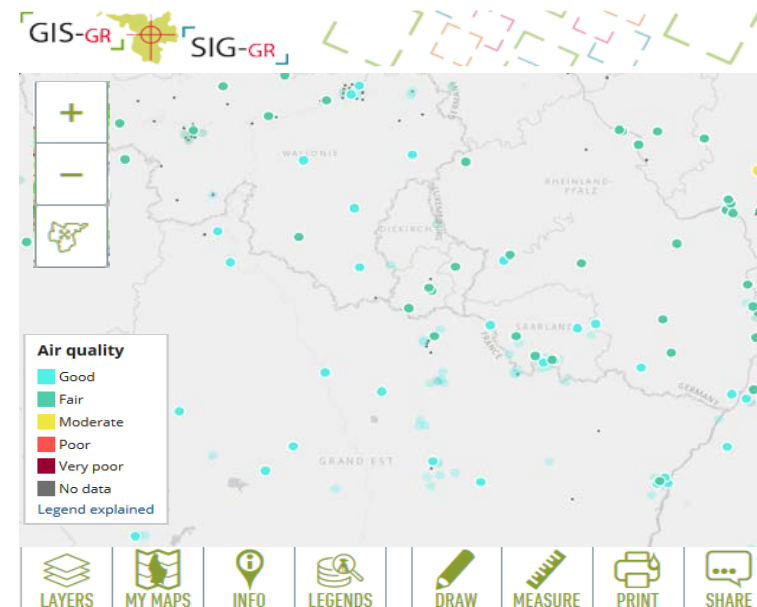
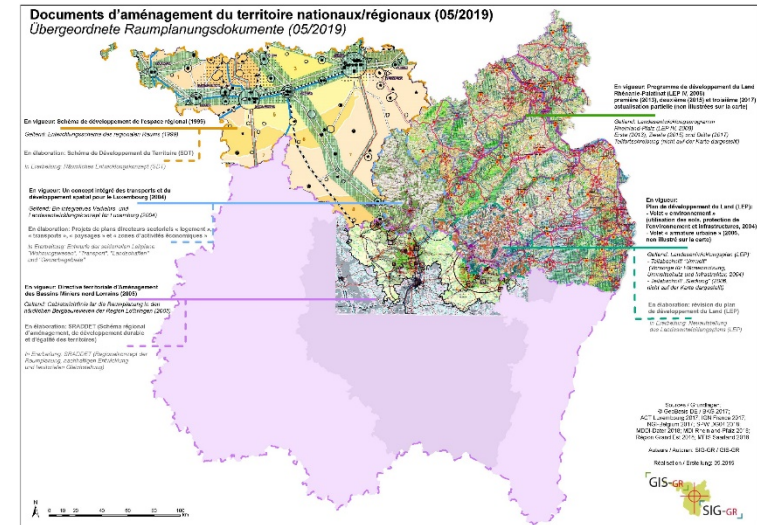
- ❑ Geographic Information System of the Greater Region (SIG-GR – GIS-GR)
- ❑ Cross-cutting territorial observation tool of the Summit of the Greater Region
- ❑ New partnership convention 2019-2023:





Ongoing works 2019-2020:

- ❑ Spatial planning:
 - SDT-GR / REK-GR: integration of maps and texts in the geoportal
 - Comparison of spatial planning documents (national-regional and intercommunal)
- ❑ Labour market and demography:
 - Contribution to the publications of the Interregional labour market observatory (OIE/IBA)
 - INTERREG VI A project Senior Activ (indicators on living conditions of elderly people)
- ❑ Environment:
 - Real time data on air quality per measuring station
 - Biotope network





Ongoing works 2019-2020:

❑ Safety and prevention:

- Brochure on road safety
- INTERREG VI A project INTERRED: risk management

❑ Agriculture:

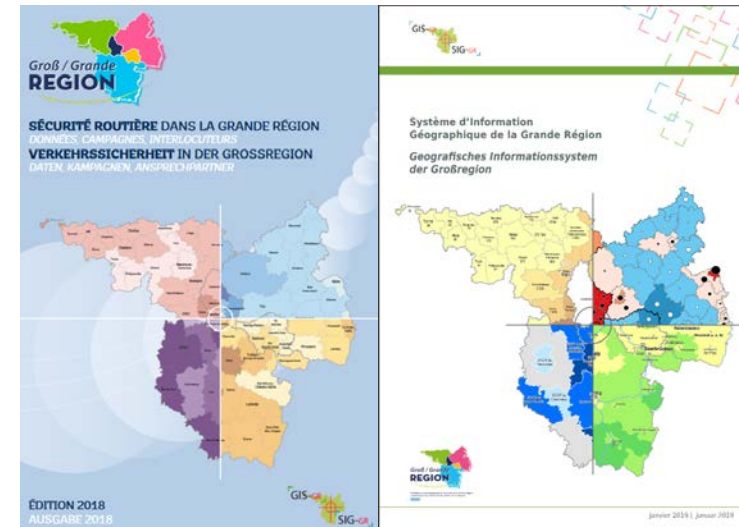
- Interactive map on the African swine fever (delimitations, fences, localisation of wild boars)

❑ B-solutions project GeoConnectGR (2018-2019)

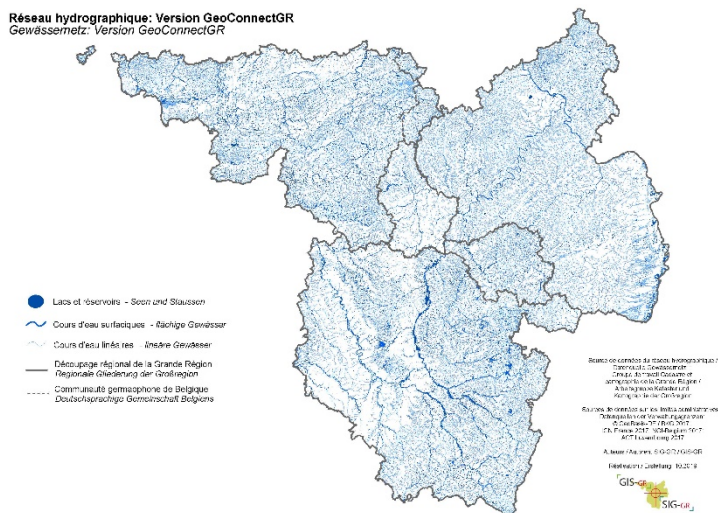
- Harmonized geodata of the hydrographic network of the Greater Region (scale 1:25.000 - 1:50.000)

❑ Communication:

- Brochure GIS-GR 01/2019, new edition end 2020
- Newsletter (first edition 09/2019)
- Puzzle of the Greater Region (demand interregional parliament)



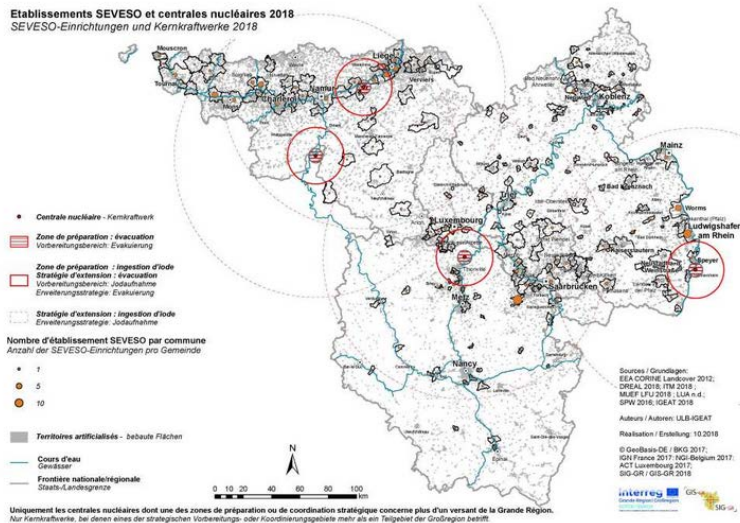
Réseau hydrographique: Version GeoConnectGR
Gewässernetz: Version GeoConnectGR





- ❑ Bilingual thematic portal (FR-DE): 13 thematic fields – 70 indicators – 135 PDF maps and analyses
- ❑ Trilingual (EN – DE – FR) Geoportal: 130 interactive layers
- ❑ Ongoing: publication of the data (shape, WMS, GJSON, ...) in the open data portal of Luxembourg
- ❑ Next step in 2020: creation of a geocatalogue to improve the accessibility of the data

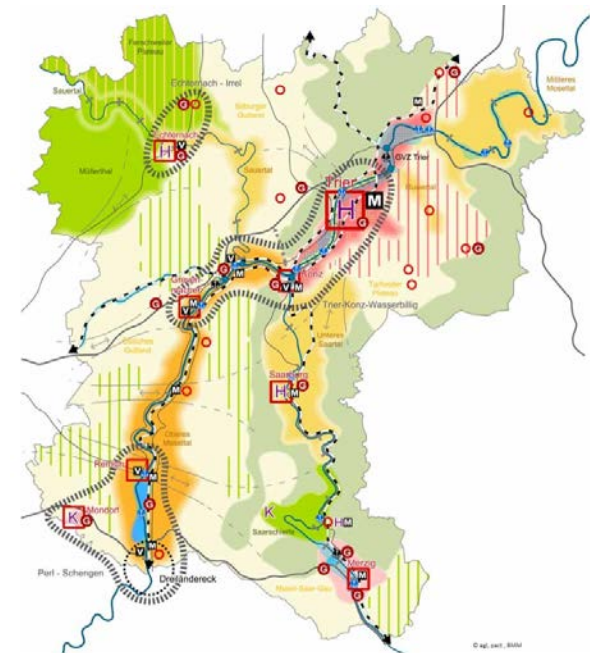
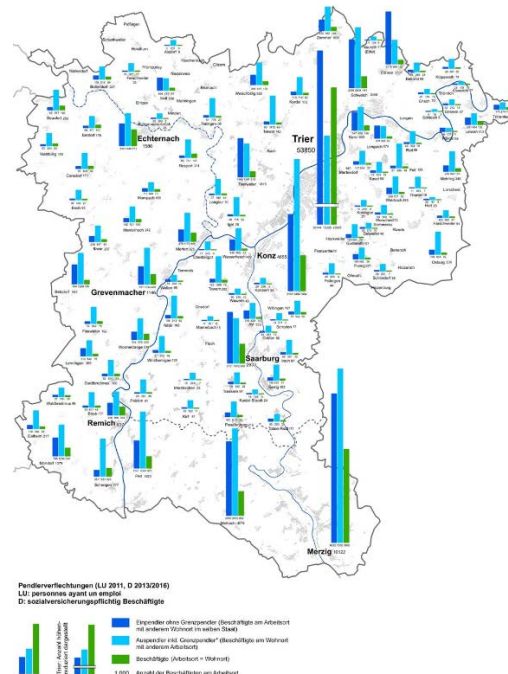
SEVESO-Einrichtungen und Kernkraftwerke 2018



Die Karte entsammt einer Zusammenarbeit zwischen dem GIS-GR und dem Institut de Gestion de l'Environnement et d'Aménagement du Territoire (IGEAT) der Freien Universität Brüssel. Sie ist Teil des Themenhefts "Umwelt und Energie", das durch das IGEAT im Rahmen der Raumanalyse für das Raumentwicklungskonzept der Großregion (REKGR) erstellt wurde.



- ❑ EOM (2016-2018)= territorial development concept of the Upper Moselle valley
 - Spatial analysis → concept → recommendations for the implementation (impulse projects)
- ❑ One of the 13 recommended impulse projects: strategy for residential building land (Wohnbaulandstrategie)
 - Objective: determine building land potentials and residential building priorities
 - Need of a common database for the potential residential land (ongoing study on available data)





- ❑ General lack of comparable (statistical) data across countries below NUTS 2-3 scale
- ❑ Priority topics: labour market - demography, housing and residential mobility, transport and mobility, spatial planning and development, environment - energy - risks
- ❑ Specific needs - questions:
 - Housing – residential mobility:
 - EOM - strategy for residential building land: common data basis for potential residential land (based on Raum+ in Rhineland-Palatinate, no data available in Saarland)
 - Residential mobility: Number of former Luxembourgish residents that move to the border regions (due to increased housing prices)
 - Ongoing feasibility study concerning the creation of a Housing Observatory for the Greater Region (LISER, results expected for 03/2020)
 - BBSR-Deutschlandatlas (Germany atlas): cross-border extension of the indicators?