

**Local scale**

- Urban type territory
- Rural type territory
- Cross-border operational equipment
- Planned cross-border equipment

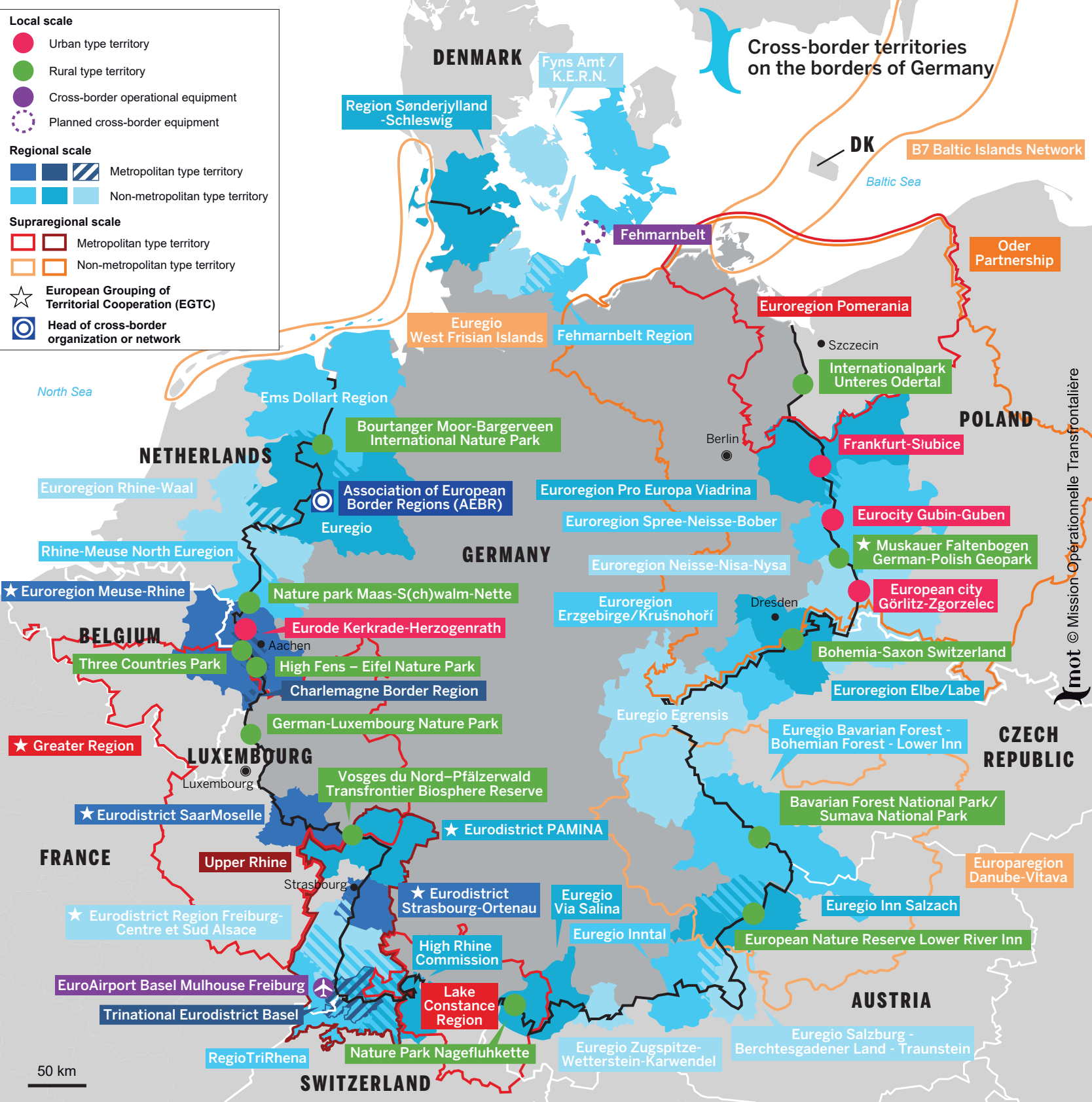
**Regional scale**

- Metropolitan type territory
- Non-metropolitan type territory

**Supraregional scale**

- Metropolitan type territory
- Non-metropolitan type territory
- European Grouping of Territorial Cooperation (EGTC)
- Head of cross-border organization or network

**Cross-border territories on the borders of Germany**



© Mission Opérationnelle Transfrontalière

50 km